

# MONTHLY MEMBERSHIP PROGRESS REPORT

District 4 C3

Results as of: 11/30/2023

GMT:

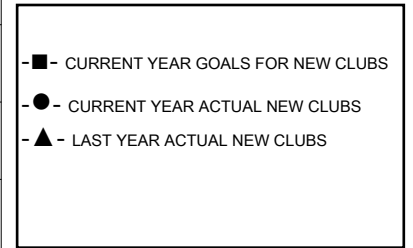
LOCATION CALIFORNIA

GMT CA

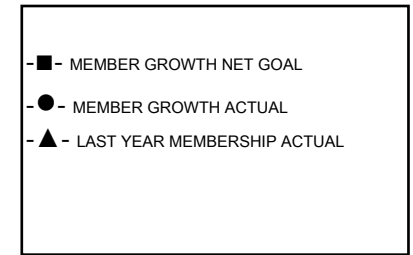
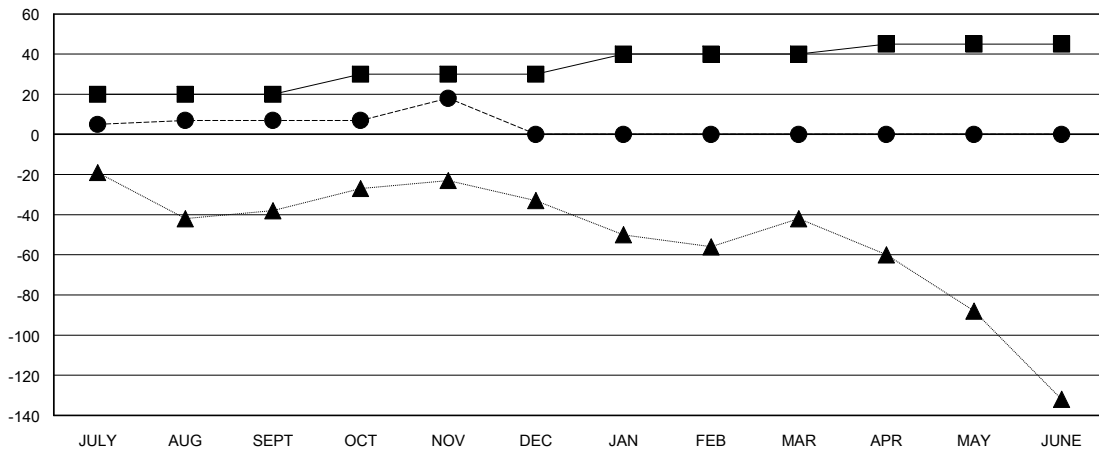
Clubs			
RESULTS FOR 2023-2024			
QUARTER	NEW CLUB GOAL	NEW CLUBS	DROPPED CLUBS
JULY/AUG/SEPT	0	0	1
OCT/NOV/DEC	1	0	0
JAN/FEB/MAR	0	0	0
APR/MAY/JUNE	0	0	0

Members			
RESULTS FOR 2023-2024			
QUARTER	MEMBER GROWTH NET GOAL	MEMBER GROWTH ACTUAL	DROPPED MEMBERS ACTUAL (including transfers)
JULY/AUG/SEPT	20	53	44
OCT/NOV/DEC	10	34	21
JAN/FEB/MAR	10	0	0
APR/MAY/JUNE	5	0	0

GOALS AND ACTUAL NEW CLUBS CUMULATIVE



GOALS AND ACTUAL MEMBERS CUMULATIVE



DROPPED CLUBS: 1	20 CLUBS OF 40 ADDED 1 OR MORE NEW MEMBERS	<b>GENDER DISTRIBUTION</b> MALE 460 (49.52%) FEMALE 469 (50.48%)
<b>DROPPED MEMBERS</b> DECEASED 5 CLUB CANCELLED 0 OTHER 60 TOTAL 65	<a href="#">CLICK HERE FOR CUMULATIVE MEMBERSHIP DATA</a>	TOTAL FAMILY UNIT MEMBERS 167 FAMILY MEMBERS PAYING HALF DUES 87